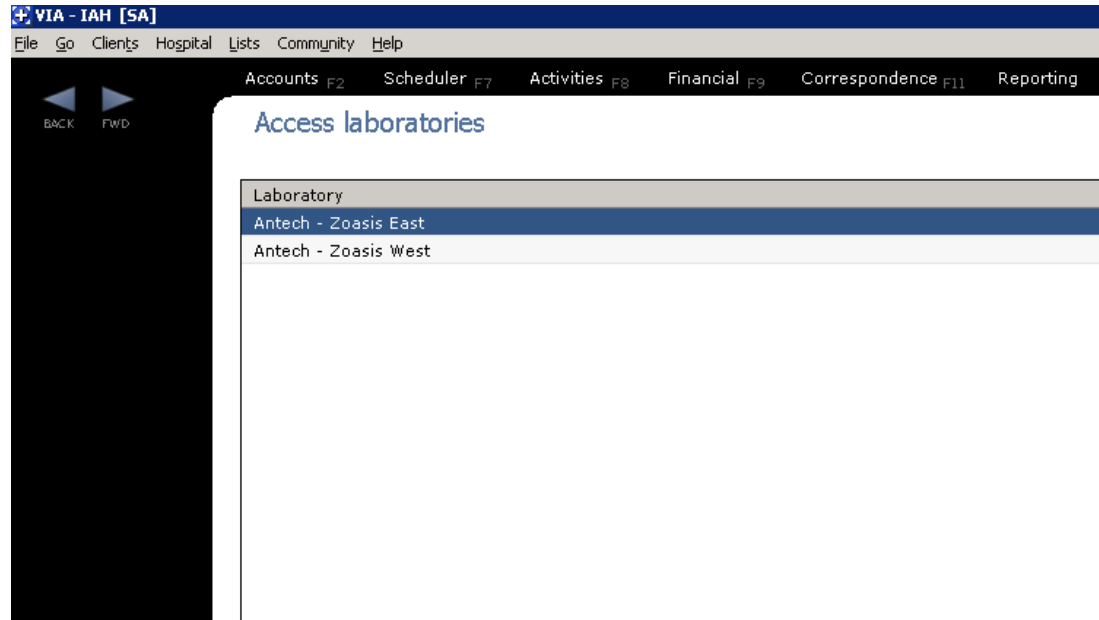


ANTECH (Zoasis) Automatic Integration Setup

1. Log into Via and go to Lists and Laboratories.
2. Choose either Antech – Zoasis East or Antech – Zoasis West depending on which laboratory you submit your requests to.



3. Enter your Antech Account ID on the line titled Account ID and then click on Extended Properties.

The screenshot shows a 'Demographics' tab with the following fields and values:

- Company: Antech Diagnostics
- Display name: Antech - Zoasis East
- Address: (empty)
- City-St-Zip: (empty)
- Contact: (empty)
- Alt contact: (empty)
- Day: (800) 872-1001
- Evening: (empty)
- Account ID: (empty)
- Lab type: Zoasis East
- Import type: Web service
- Website: (empty)
- Email: (empty)

Buttons at the bottom: New Lab, Apply, Undo, Previous, Next. A button labeled 'Extended Properties...' is located at the bottom right of the form area.

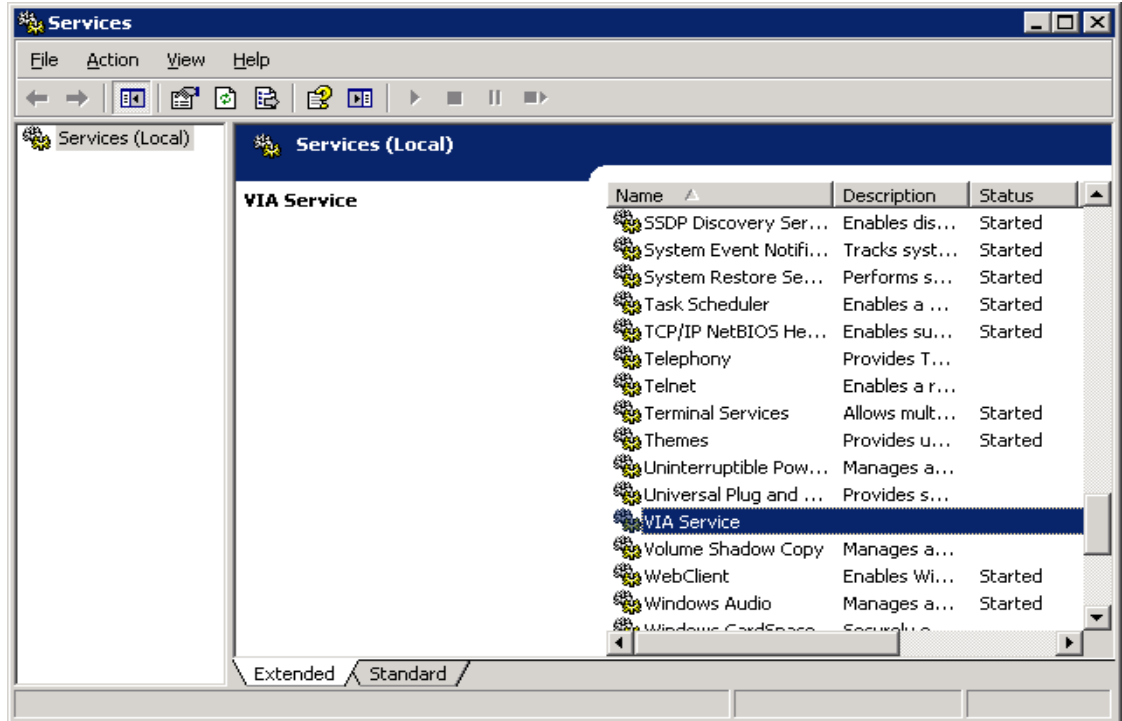
4. Enter your Zoasis ID on the line titled Zoasis ID, your Zoasis.com username on the line titled Account User, and your Zoasis.com password on the line titled Account Password. The password is case sensitive. Click OK.

The screenshot shows a 'Properties' dialog box with the following fields and values:

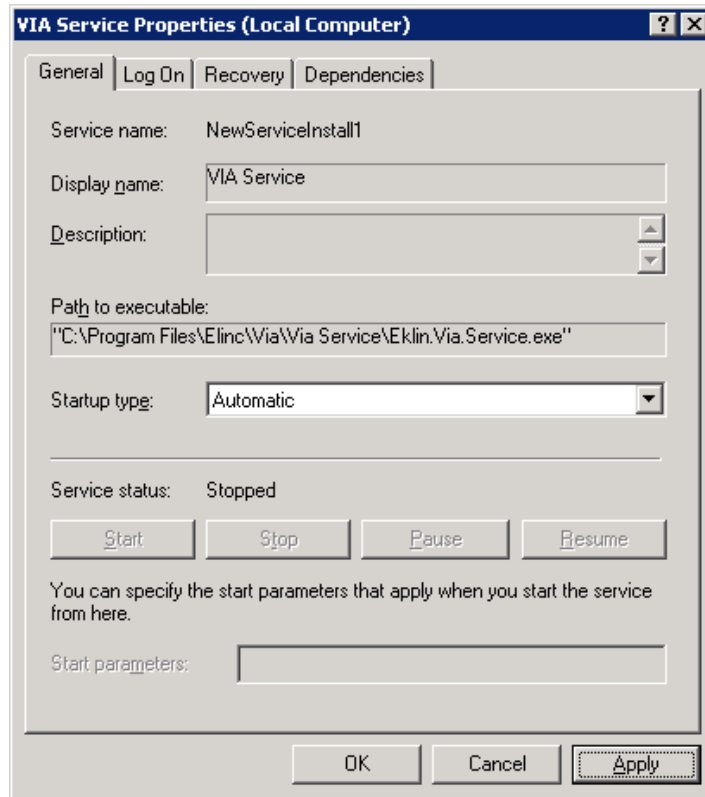
- Zoasis ID: 0
- Corporate ID: 0
- Account user: (empty)
- Account password: (empty)
- Service URL: https://www.zoasis.com/service/services?WSDL
- Service login: wsuser
- Service password: *****
- Receive interval: 30

Buttons on the right: OK, Cancel.

5. Click Apply on the next screen to save your changes. Exit out of Via and End Process on the Import Manager.
6. You will then need to login as the administrator to the computer that will be running the Via Import Manager and click on Start or the Windows logo in the lower left corner of the screen. Type Run and then Services.msc. The Services window should open.



7. Scroll down to VIA Service and right-click on it and choose Properties. Change the startup type to Automatic, click on Apply, and then click on Start. Once the service is started you can choose OK.



8. You can now either restart your Import Manager if you were using Antech prior to these changes, or go to Start, All Programs, Via Tools, and choose Via Import Manager.

9. Change the interface number to 2, change the lab type to either Zoasis East or Zoasis West, make sure the Acquisition Mode is set to Auto, and the COM port is set to 1, click the box next to Enabled.

